



G4L

Visible Light Facial Recognition and Multi-Biometric Time & Attendance and Access Control Terminal

Compatible with
 **ZKBioSecurity**

Compatible with
 **ZKBio Time**



Enhanced Visible Light Facial Recognition is the latest technology of ZKTeco, aimed to overcome shortcomings of previous facial recognition and achieve an all-rounded upgrade on whatever performance and reliability. G4L is a multi-biometric identification terminal, notably offers enhanced Visible Light facial recognition and SilkID fingerprint authentication technology.

Compared with other near-infrared facial identification devices, G4L, equipped with advanced Visible Light Facial Recognition technology, enables quicker automatic face detection and facial recognition when a target enters its detection distance from 0.5m to 2.5m.

With new deep learning algorithms applied, the anti-spoofing technology performance has been dramatically heightened and can prevent different types of photos and video attacks.

Also, with the cutting-edge 3D Neuron Fingerprint Algorithm, G4L precisely authenticates dry, wet, or rough fingerprints efficiently and accurately. Apart from Visible Light facial recognition and SilkID fingerprint authentication, G4L also supports identification with RFID cards and passwords.

Features



Revolutionary SilkID Fingerprint Sensor



Proactive Facial Recognition



Mask Detection



Visible Light Facial Recognition



New Height of Anti-Spoofing



Touchless for Better Hygiene



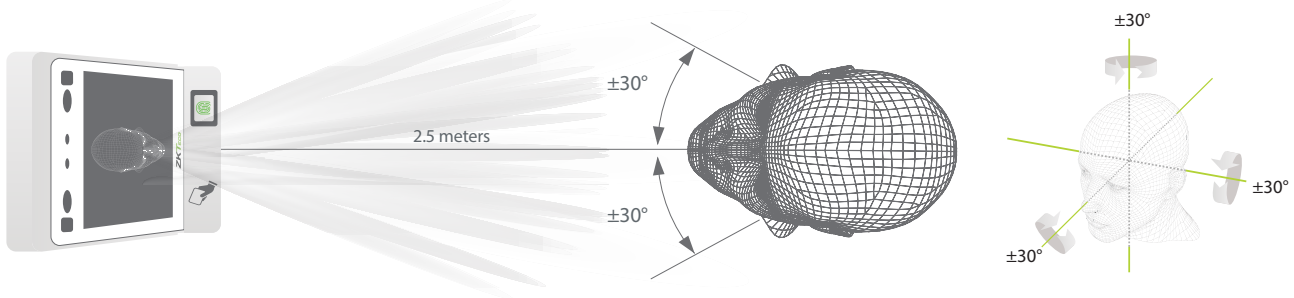
Multiple Verification Methods



Speedy Recognition

Long Recognition Distance of 2.5m Plus Extra Wide Angle

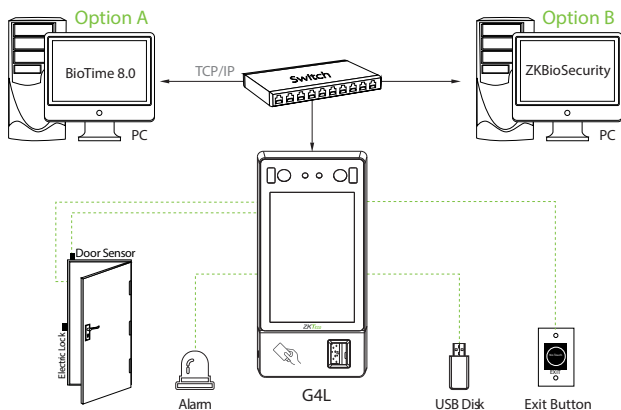
The recognition distance has been greatly extended to 2.5 meters, which significantly improves the maximum traffic rate. While most of the algorithms only support 15-degree angle facial recognition, ZKBioFace supports 30-degree angle facial recognition.



Specifications (G: GL Exclusive Feature)

Capacity User 10,000 (G) Face 10,000 (G) Fingerprint 10,000 Card 10,000 Transaction 1,000,000	Hardware (G) 900MHz Dual Core CPU Memory 512MB RAM/ 8G Flash (G) 2MP WDR Low Light Camera (G) 7-inch Touch Screen, 1280*720 pixels Linux Operating System Adjustable Monitor Brightness	Special Functions (G) Visible Light Facial Recognition (G) Alive Face Detection Multiple Biometric Verification Modes Mask Detection; Facial Verification available with Masks
Communication TCP/IP Wi-Fi Wiegand Input Wiegand Output RS485 (G) USB Host	Standard Functions ID Card / Work Code / ADMS DST / Bell Schedule Attendance Status Auto-Switch Record Query / Photo ID	Compatibility ZKBio Time ZKBioSecurity (Time & Attendance)
Access Control Interface Lock Relay Output Exit Button Alarm Output Door Sensor	Optional Functions (G) 13.56 MHz IC / LEGIC Card (G) PoE	Additional Info Algorithms ZKFace V5.8 ZKFinger V10.0 Working Temperature 0°C - 50°C (32°F - 122°F) Working Humidity <90% Dimensions (W*H*D) 264*112*54.8 mm Facial Recognition Speed ≤0.3 sec (G) Facial Recognition Distance 0.5m ~ 2.5m Power DC12V 3A

Configuration



Dimensions (mm)

