

Face Plates with Icon & ID Label

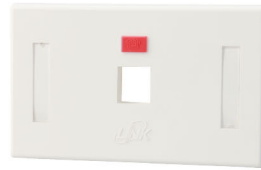


LINK Face Plate designs for fitting standard of electrical junction box, easy installation and checking your cabling system with Icon Labeling System which complied to TIA/EIA-606 Standard. Face Plate selectable of single and double port, which is suitable for all RJ45 & RJ11 modular jack, changer and blank insert. Write-on label is protected by clear plastic cover.

SPECIFICATION



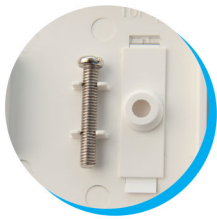
Material	: ABS/PC, UL94V-0
Color	: Shiny Ivory & Shiny White with LINK logo
ID Label	: White Paper with clear plastic cover
Icon	: Computer, Telephone, Blank
Dimension	: L 114 x W 70 x H 7mm. (2" x 4" Standard)
Approval	: UL Listed E196947 and RoHS Compliant
Support	: RJ45 Jack, Tool free RJ45 Jack, RJ11 Jack and Multimedia Modular Insert



A



B



C



D

Part No.	Description	Figure
US-2001AWH	FACE PLATE 1 PORT with ICON & LABEL ID, Shiny White Color	A
US-2002AWH	FACE PLATE 2 PORT with ICON & LABEL ID, Shiny White Color	B
US-2001A	FACE PLATE 1 PORT with ICON & LABEL ID, Shiny Ivory Color	C
US-2002A	FACE PLATE 2 PORT with ICON & LABEL ID, Shiny Ivory Color	D

Face Plates with Shutter, Icon & ID Label

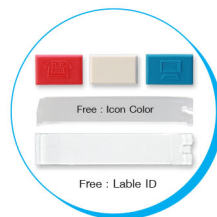
LINK Face Plates with shutter are new designed for preventing dust and humidity which easy fitting standard of electrical junction box, easy installation and checking your cabling system with ID Labeling System which complied to TIA/EIA-606 Standard. Face Plate selectable of single, double and four port. Write-on label protected by clear plastic cover. LINK Face Plate fits all types of RJ45 & RJ11 Modular Jack, changer and blank insert and have shutter for dust protection.

SPECIFICATION

Material	: ABS/PC, UL94V-0
Color	: Shiny White with LINK logo
ID Label	: White Paper with clear plastic cover
Icon	: Computer, Telephone, Blank
Dimension	: L 114 x W 70 x H 7mm. (2" x 4" Standard)
Approval	: UL Listed E196947 and RoHS Compliant
Support	: RJ45 Jack, Tool free RJ45 Jack, RJ11 Jack and Multimedia Modular Insert



A



B

Part No.	Description	Figure
US-2121A	FACE PLATE 1 PORT with SHUTTER, ICON & ID LABEL, Shiny White	A
US-2122A	FACE PLATE 2 PORT with SHUTTER, ICON & ID LABEL, Shiny White	B