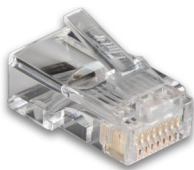


LINK Category 5E RJ45 Plug is designed for both field terminated of solid UTP and stranded wire for Patch Cord Assembly. The body is transparent to see the 3 prong contacts and wire inside which terminated. The mechanical of inner body is performed to easy terminated by crimp tool. LINK RJ45 Plug is suitable for all of standard cable 26-22 AWG UTP or 26-22 AWG F/UTP for shield plug. The performance with LINK Cable CAT 5E is exceeds ANSI/TIA-568.2-D requirement.



SPECIFICATION

| | |
|-------------|--|
| Standard | : ANSI/TIA-568.2-D Category 5e, ISO/IEC 11801:2017 Class D and EN-50173-1 |
| Application | : 10/100/100 BASE-T, 2.5G BASE-T, IEEE 802.3i/u/ab/bz, PoE/PoE+, 4/16 Token Ring, 52/155/622Mbps and 1.2Gbps ATM, ISDN, VoIP and other |
| Housing | : Polycarbonate, UL94V-0 with LINK logo |
| Contact | : 3 Contact points, Phosphor Bronze with over 50 micro-inches gold plating |
| Accept Wire | : 26AWG - 22AWG Solid & Stranded Wire |
| Approvals | : UL Listed and Intertek Channels Test |
| Certified | : Lead-free & RoHS Compliant |



A



B



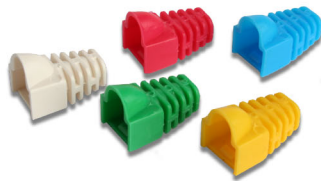
C

| Part No. | Description | No. of Position | Packing | Figure |
|-----------|---------------------------------------|-----------------|-------------|--------|
| US-1001 | CAT 5E RJ45 Modular Plug, HP | 8 | 10 Each/Pkg | A |
| US-1051-X | CAT 5E RJ45 Modular Plug, HP, Crystal | 8 | 10 Each/Pkg | B |
| US-1003 | CAT 5E RJ45 Modular Plug, SHIELD | 8 | 1 Each/Pkg | C |

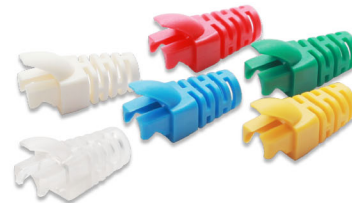
X Color = 2 (Red), 3 (Green), 4 (Blue), 5 (Yellow), 6 (Black)

Modular Plug Boots (CAT 5E)

LINK Plug Boots are designed to cover which protect RJ45 plugs and cables. It produces from special PVC with rubber for protect each of plug and easy to remove. It helps you solve your hard time finding the end of cable for maintenance or relocation or makes organizing your patch cord system quickly. It is suitable for both field terminated or patch cord maker and also for unshield and shield plug.



A



B

| Part No. | Description | Packing | Figure |
|----------|-------------------------------------|-------------|--------|
| US-600X | CAT 5E Plug Boot | 10 Each/Pkg | A |
| US-651X | CAT 5E Locking Plug Boot, OD 5.5 mm | 10 Each/Pkg | B |

X Color = 0 (Transparent) 1 (Ivory), 1W (White), 2 (Red), 3 (Green), 4 (Blue), 5 (Yellow)