




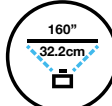




**DEFY SPACE  
 CONSTRAINTS WITH  
 EXTREME SHORT  
 THROW PROJECTION.**

21:9 aspect ratio screen size. Visual for illustration purposes only.

**Setting the new standard with extreme short throw projection in 4KE<sup>1</sup> resolution.**

The innovative EB-810E/815E projectors from Epson features extreme short throw capabilities. Packed with user-friendly features, these projectors seamlessly enhance classroom learning, foster hybrid workspace collaborations, and elevate retail display presentations. Boasting an immersive 5,000 lumens on a stunning 21:9 widescreen, the EB-810E/815E projectors, equipped with 4K Enhancement technology<sup>1</sup>, deliver unforgettable presentations. Notably, their extreme short-throw design not only ensures dynamic displays but also maximises space efficiency, making them the perfect choice for impactful big screen projections, even in smaller meeting rooms.

 4K Enhancement Resolution <sup>1</sup>	 Widescreen Display	 20,000 Light Hours <sup>2</sup>
 Extreme Short Throw 160" @ 32.2cm <sup>3</sup>	 Wireless Projection	 USB Direct Playback

**ENGINEERED FOR good**



**Extreme Short-Throw Projection**

Presenting sharp and glare-free projections on a 21:9 widescreen display with minimal shadow interference.

**4K Enhancement Technology<sup>1</sup>**

Delivering smooth and detailed picture quality at 5,000 lumens with 4K enhancement technology.

**Ease of Installation**

Digital image correction function for ease of installation on any surface for nearly any image size and aspect ratio.

<sup>1</sup> 4K Enhancement Technology shifts each pixel to surpass Full HD resolution on screen.  
<sup>2</sup> Approximate time until brightness decreases 50% from first usage. Measured by acceleration test assuming use of 0.04 - 0.20 mg/m<sup>3</sup> of particulate matter. Time varies depending on usage conditions and environments.  
<sup>3</sup> Wall to front of projector. 160-inch diagonal size is only available with 16:9 aspect ratio.



21:9 aspect ratio screen size. Visual for illustration purposes only.

# Up Close and Personal

Wide Aspect Ratio Screen with Brightness up to 5,000 Lumens

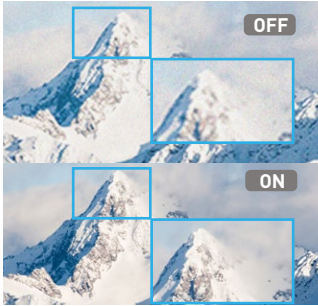
## Wide 21:9 Aspect Ratio\*

Screen sizes are easily interchangeable according to your presentation needs. You can conveniently project up to 160 inches<sup>^</sup> diagonally without compromising on picture quality.

\*The 21:9 aspect ratio is commonly used for video conferencing in hybrid workspaces.  
<sup>^</sup>Up to 160" diagonal size is only for 16:9 aspect ratio.

## High-Definition Images

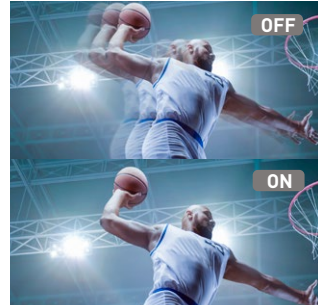
4K enhancement technology shifts each pixel diagonally, surpassing Full HD image quality to give you mesmerising visuals that transcend conventional size constraints for all your presentations.



**Super Resolution**  
 Delivering good visibility, with photos and text both well balanced and sharp.



**Scene Adaptive Gamma**  
 Achieve optimal contrast effortlessly with automatic gamma level adjustment.



**Frame Interpolation**  
 A feature that delivers smoother and sharper motion pictures in every projection.



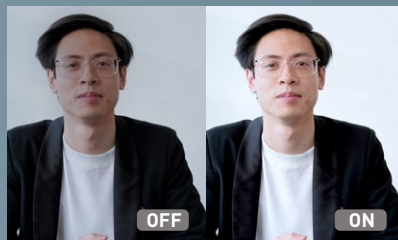
**High Dynamic Range (HDR)\***  
 Precise detailing for light and dark gradation contents.

\*HDR+ is not supported.



## Wake-Up Signal

Automatically turns on the projector when a video signal is detected.



## User-Friendly Colour Mode

Dedicated preset settings for video conferencing.



# Compelling and Engaging

Enriching Your Learning Journey on a 160-inch Screen

Only for 16:9 Aspect Ratio

## Extreme Short Throw Lens

L-shape short throw lens with a spectacular throw ratio of 0.16 allows a 100-inch screen projection effortlessly with only a 9.8cm distance from the wall to the projector.



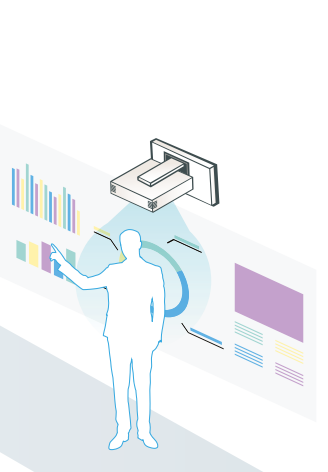
## Obstruction-Free Viewing

Minimal shadows are formed on screen as light is not blocked by the presenter, allowing your audience to see sharp and detailed projections.

Standard Throw Projector

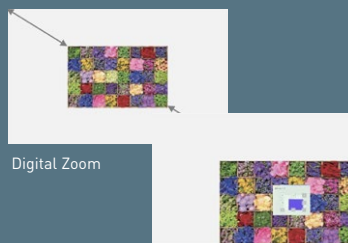


Extreme Short Throw Projector



## Quality Sound

Powerful 16W (8W x 2) stereo speakers with clear voice and standard modes.



Digital Zoom

Image Shift



## Screen Flexibility

Enjoy the flexibility to adjust the projector screen according to your needs.



IMMERSIVE PROJECTION ROOM

# Immersive Solution

Amplifying Creativity with Hassle-Free Connectivity

## Direct Contents Playback

Conveniently play back images from a USB drive without the need for a computer or player. The multi-functional content manager also allows you to create playlists, convert files\*, add effects, and set playlist schedules\*, saving them on the USB drive conveniently.



\*Only for Epson Projector Content Manager App.

## Fuss-Free Connectivity Choices

Compatible with a wide range of external devices, the projector comes with additional ports including HDMI, HDBaseT and USB. Ideal for large venues, HDBaseT can transmit Full HD video, audio and Ethernet at low cost through Cat 5e/6 cables up to 100 metres.



The HDBaseT and the HDBaseT Alliance logos are trademarks of the HDBaseT Alliance.

## Convenient Content Management

### Epson Creative Projection App

For iOS

Create impressive custom content on your iPhone or iPad easily using the app's built-in templates and stamps.

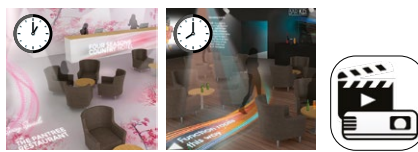


### Epson Projector Content Manager App

For Windows / Mac

Conveniently add images and videos to playlists and save them onto an external storage device.

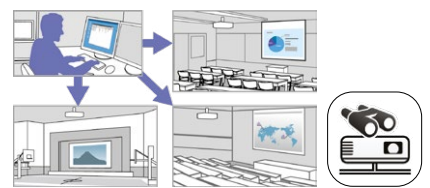
Daytime Playback    Night-time Playback



### Epson Projector Management App

For Windows

Easy-to-use web-based solution for monitoring and controlling your networked projector fleet.



## 20,000 Maintenance-Free Hours

Epson's unique laser technology allows for 20,000 hours\* of maintenance-free laser light source in the projector. Users can enjoy peace of mind and highly reliable performance, thanks to the innovative fixed phosphor unit, providing long-lasting durability to the device.



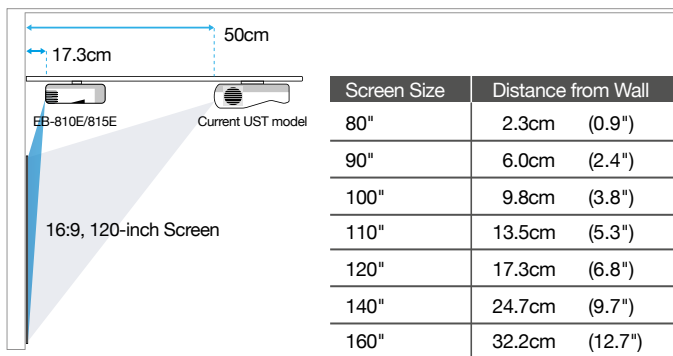
\*No required maintenance for the light source for up to 20,000 hours. Approximate time until brightness decreases 50% from first usage. Measured by acceleration test assuming use of 0.04 - 0.20 mg/m3 of particulate matter. Time varies depending on usage conditions and environment. Replacement of parts other than the light source may be required in a shorter period.

# Streamlined Set-Up And Installation

## Wall Mount Advantage

Experience expanded installation options with the EB-810E/815E projectors' extreme short-throw lens. Wall mount installation, facilitated by the dedicated wall mount (ELPMB75) and VESA support\*, minimises shadows, ensuring an obstruction-free view for your audience.

\*Also compatible with ELPMB22 and ELPMB30.



## Desktop Installation Advantage

EB-810E/815E stands out with its extreme short-throw capability, making desktop installation a breeze—an ideal solution for limited space, ensuring maximum screen size even in close proximity.

- Significant savings on installation cost against cabling, ceiling, and reinforcement works
- Fast and hassle-free installation



## Epson Setting Assistant (ESA)

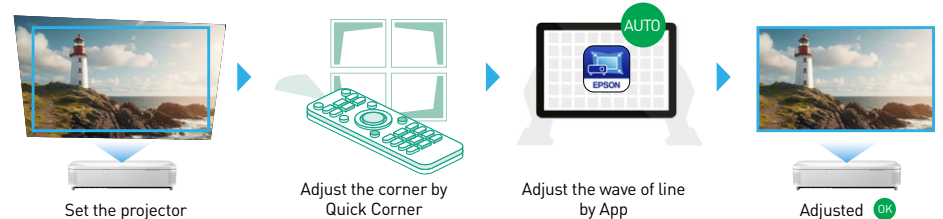
Effortlessly save time and manpower with the user-friendly Epson Setting Assistant (ESA) mobile app. Using your smartphone's camera, ESA automatically corrects the shape of the projected image, eliminating the need for tedious manual adjustments. Enjoy a fuss-free experience as ESA ensures precision without the hassle of continuous re-adjustments.



### With "Screen"



### Without "Screen"



Note: If you set the projector without screen, you need to adjust the projected display's shape to square manually. APP help to adjust the line to straight.

## Wireless Connection

### Screen Mirroring

Enjoy the freedom to share content wirelessly from multiple devices with the built-in screen mirroring function.



### Epson iProjection App

Easily project images and files from various devices such as Windows, Mac OS, iOS, Android™ or Chromebook.



# Unveil The True Colours

EPSON 3LCD PROJECTORS

1-CHIP PROJECTORS

**True BRIGHTNESS**

**True COMFORT**

**True REALISM**

Up to 3x  
Brighter Colours

No Rainbow  
Effect

3x Wider  
Colour Gamut



**EPSON 3LCD PROJECTORS**

**1-CHIP PROJECTORS**



**WHITE 3000 LUMENS**



**COLOUR 3000 LUMENS**



**LIGHT SOURCE**

**PRISM**



**WIDER COLOUR RANGE**



**WHITE 3000 LUMENS**



**COLOUR 430 LUMENS\*\***



**LIGHT SOURCE**

**ROTATING COLOUR WHEEL**



**SMALLER COLOUR RANGE**



Scan here to find out more



22 YEARS RUNNING SINCE 2001 - 2022  
SOURCE: PATA/RESEARCH CONSULTING

\*Based on Epson's 2021 and 2022 projector sales in the 9-10 price range. \*\*Based on Epson's 2021 and 2022 projector sales in the 9-10 price range. SOURCE: PATA/RESEARCH CONSULTING



# Efforts to mitigate environmental impacts in manufacturing



Toyoshina plant in Japan

## Epson becomes the Manufacturing Industry's First<sup>1</sup> to Switch to 100% Renewable Electricity at all sites<sup>2</sup> in Japan.

In November 2021, we achieved 100% renewable electricity at all domestic sites<sup>2</sup>, Shinshu Green Electricity, CO<sub>2</sub>-free value-added electric power produced locally in Nagano Prefecture using Nagano Prefecture hydroelectric power. This is both reducing Epson's GHG emissions<sup>3</sup> and increasing consumption of locally produced energy.

## Assembled<sup>4</sup> using 100% renewable electricity

Epson announced that its worldwide group sites<sup>2</sup> will all meet their electricity needs from 100% renewable energy sources (renewable electricity) by 2023. We have achieved 100% renewable energy at our projector's manufacturing site in the Philippines by generating power with a rooftop mega-solar power plant and by switching to a mix of geothermal and hydroelectric power in January 2021.



Epson Precision (Philippines), Inc.



## Over 80% recycled cardboard packaging

All carton box packaging of Epson's projectors are made by over 80% recycled cardboard.

1 Among Japanese companies that have joined the RE100. Per Epson research as of October 27, 2021.  
2 Excludes leased properties of some sales sites, etc.  
3 GHG (Greenhouse Gas), GHG scope 1, 2, 3 emission  
4 Products assembled in the Philippines.

## SPECIFICATIONS

MODEL NUMBER	EB-810E	EB-815E
SKU Number	V11HA99080	V11HA99180
Projection Technology	RGB liquid crystal shutter projection system (3LCD)	
<b>Specifications of Main Parts</b>		
LCD	Size: 0.62" (C2Fine)	
	Resolution: 1080P (4K Enhancement)	
	Aspect Ratio: 16:9	
Projection Lens	Type: Focus (Manual)	
	F-Number: 1.80	
	Focal Length: 2.3mm	
	Zoom Ratio: 1.0 – 1.35 (Digital Zoom)	
	Throw Ratio: 0.16 – 0.22 (Wide – Tele)	
<b>Light Source</b>		
Type	Laser Diode	
Life (Normal / Quiet / Extended)	20,000 / 20,000 / 30,000 hrs	
<b>Screen Size (Projected Distance)</b>		
Zoom: Wide	80" to 160" (27.8 – 57.8 m) @ 16:9	
	66" to 130" (28.1 – 57.4 m) @ 4:3	
	74" to 148" (27.8 – 57.8 m) @ 16:10	
	76" to 151" (27.9 – 57.5 m) @ 21:9	
	75" to 148" (28.0 – 57.4 m) @ 16:6	
Zoom: Tele	60" to 118" (28.2 – 57.5 m) @ 16:9	
	49" to 96" (28.2 – 57.2 m) @ 4:3	
	55" to 109" (27.9 – 57.4 m) @ 16:10	
	57" to 112" (28.2 – 57.6 m) @ 21:9	
	56" to 110" (28.3 – 57.6 m) @ 16:6	
<b>Brightness<sup>1</sup></b>		
White Light Output (Normal / Eco)	5,000lm / 3,500lm	
Colour Light Output (Normal)	5,000lm	
Contrast Ratio	Over 2,500,000 : 1	
<b>Internal Speaker(s)</b>		
Sound Output	8W x 8W Stereo	
<b>Geometry Correction</b>		
Quick Corner	Yes	
<b>Connectivity</b>		
Digital Input	HDMI	2 (HDCP 2.3)
	HDBaseT	1 (HDCP 2.3)
USB Input	USB Type A	2 (Port 1 for PC Free, Firmware Update, Copy OSD Settings, ELPAP11 ; Port 2 for PC Free, Firmware Update, Copy OSD Settings or 5V/2A Power Supply)
	USB Type B	1 (For Firmware Update, Copy OSD Settings)
Control I/O	RS-232C	D-Sub 9pin x 1
Digital Output	HDMI	1 (HDCP 2.3)
Network	Wired LAN	RJ45 x 1 (100Mbps)
	Wireless LAN	Built-in and Optional (using ELPAP11)
<b>Wireless LAN (In-Built) and Screen Mirroring</b>		
Supported Speed For Each Mode	Infrastructure: IEEE 802.11b (2.4GHz): 11Mbps <sup>2</sup> , IEEE 802.11g (2.4GHz): 54Mbps <sup>2</sup> , IEEE 802.11n (2.4GHz): 72.2Mbps <sup>2</sup> , IEEE 802.11a (5GHz): 54Mbps <sup>2</sup> , IEEE 802.11n (5GHz): 150Mbps <sup>2</sup> , IEEE 802.11ac (5GHz): 325Mbps <sup>2</sup> Access Point (Wi-Fi Direct): IEEE 802.11g (2.4GHz): 54Mbps <sup>2</sup> , IEEE 802.11n (2.4GHz): 72.2Mbps <sup>2</sup> , IEEE 802.11a (5GHz): 54Mbps <sup>2</sup> , IEEE 802.11n (5GHz): 150Mbps <sup>2</sup> , IEEE 802.11ac (5GHz): 325Mbps <sup>2</sup>	
Supported Mode	Infrastructure, Access Point (Wi-Fi Direct)	
Supported Security Type	Infrastructure: Open, WPA2/WPA3-PSK, WPA2/WPA3-EAP Supported EAP Type: PEAP, PEAP-TLS, EAP-TLS, EAP-Fast Access Point (Wi-Fi Direct): WPA2-PSK (AES)	
<b>Wireless LAN (Using Optional ELPAP11)</b>		
Supported Speed For Each Mode	Infrastructure: IEEE 802.11b (2.4GHz): 11Mbps <sup>2</sup> , IEEE 802.11g (2.4GHz): 54Mbps <sup>2</sup> , IEEE 802.11n (2.4GHz): 72.2Mbps <sup>2</sup> , IEEE 802.11a (5GHz): 54Mbps <sup>2</sup> , IEEE 802.11n (5GHz): 150Mbps <sup>2</sup> , IEEE 802.11ac (5GHz): 325Mbps <sup>2</sup> Access Point (Wi-Fi Direct): IEEE 802.11g (2.4GHz): 54Mbps <sup>2</sup> , IEEE 802.11n (2.4GHz): 72.2Mbps <sup>2</sup> , IEEE 802.11a (5GHz): 54Mbps <sup>2</sup> , IEEE 802.11n (5GHz): 150Mbps <sup>2</sup> , IEEE 802.11ac (5GHz): 325Mbps <sup>2</sup>	
Supported Mode	Infrastructure, Access Point (Wi-Fi Direct)	
Supported Security Type	Infrastructure: Open, WPA2/WPA3-PSK, WPA2/WPA3-EAP Supported EAP Type: PEAP, PEAP-TLS, EAP-TLS, EAP-Fast Access Point (Wi-Fi Direct): WPA2-PSK (AES)	
<b>Operating Temperature<sup>3</sup></b>		
Single Use	Low Altitude	0 – 2,286 m / 7,500 ft: 0 °C – 40 °C [32 °F – 104 °F]
	High Altitude	Over 2,286 m / 7,500 ft: 0 °C – 35 °C [32 °F – 95 °F]
20% to 80% Humidity, No Condensation		
Over 1,500 m / 4,921 ft with High Altitude Mode: 0 – 3,048 m (0 – 10,000 ft)		
<b>Operating Altitude</b>		
<b>Direct Power On / Off</b>		
<b>Start-Up Period</b>		
<b>Quick Start-Up</b>		
<b>Cool Down Period</b>		
Air Filter	Type	Electrostatic Filter
	Maintenance Cycle <sup>4</sup>	20,000 hours (Normal)
<b>Power Supply Voltage</b>		
<b>Power Consumption (220 - 240V)</b>		
Laser Diode On (Normal / Extended)		
Standby (Normal / Eco)		
<b>Dimension Excluding Feet (D x W x H)</b>		
<b>Weight</b>		
<b>Fan Noise (Normal / Quiet)</b>		

<sup>1</sup> Colour brightness (colour light output) and white brightness (white light output) will vary depending on usage conditions. Colour light output measured in accordance with IDMS 15:4; white light output measured in accordance with ISO 21118.

<sup>2</sup> Maximum speed and range is achievable when used with same enhanced mode technology. Actual data rates, features and performance may vary depending on your computer system, the environment and other factors.

<sup>3</sup> When environmental temperature becomes high, the brightness becomes dark automatically.

<sup>4</sup> When used in the general office environment (the amount of floating dust: 0.04 - 0.2 mg/m<sup>3</sup>). Based on the Epson's in-house test results.

### Supplied Accessories

Power Cable: 4.5m, 3 wires  
Remote Control with 2xAA Battery  
User Guide

### Optional Accessories

Air Filter: ELPAP64  
Ceiling Mount: ELPMB22, ELPMB30  
Document Camera: ELPDC21  
Wireless Presentation System: ELPWP10, ELPWP20  
Wireless LAN unit: ELPAP11  
Setting Plate: ELPMB75  
Ambient Light Rejecting (ALR) Screen: ELPSC35, ELPSC36

EB-810E



EB-815E



©2023 Epson Singapore Pte Ltd. All Rights Reserved. Reproduction in part or in whole, without the written permission from Epson, is strictly prohibited.

EPSON is a registered trademark of Seiko Epson Corporation.

All other product names and other company names used herein are for identification purposes only and are the trademarks or registered trademarks of their respective owners.

Epson disclaims any and all rights in those marks. Projected images shown herein are simulations. The actual product design and contents may vary. Specifications are subject to change without notice and may vary between countries. Please check with local Epson offices for more information.

Apple, iPad and iPhone are trademarks of Apple Inc., registered in the U.S. and other countries. App Store is a service mark of Apple Inc.

Android is a trademark of Google Inc.

Dealer's Stamp

Information correct at time of printing.  
Printed December 2023

### Epson (Thailand) Co.,Ltd.

Puun Tower, 22<sup>nd</sup> Floor  
1152 Rama 4 Road, Klong Toei, Klong Toei, Bangkok 10110

### Contact Us

✉ : support@eth.epson.co.th  
📞 : Epson Thailand  
☎ : 02-460-9699

### Follow Us

Facebook, Instagram, LinkedIn, Twitter, YouTube  
EpsonThailand

### More Details

Website, Product Today, Virtual Solution Center  
QR codes for website, product today, and virtual solution center.