


2MP HD WIFI Bullet Network Camera

IPC2122LB-AF28(40)WK-G




2MP


**WIFI
Connection**



Built-in Mic




Smart IR




Edge Storage

**Ultra
H.265**



HLC



IP 67

Features

- High quality image with 2MP, 1/2.9"CMOS sensor
- 2MP (1920*1080)@30/25fps; 720P (1280*720)@30/25fps
- Ultra 265, H.265, H.264, MJPEG
- Built-in Mic
- Smart IR, up to 30m (98ft) IR distance
- Supports 512 G Micro SD card
- IP67 protection
- 3-Axis

Specifications

Camera	Description
--------	-------------

Max Resolution	IPC2122LB-AF28WK-G/IPC2122LB-AF40WK-G:2MP
Sensor	IPC2122LB-AF28WK-G/IPC2122LB-AF40WK-G:1/2.9" CMOS
Min. Illumination	IPC2122LB-AF28WK-G/IPC2122LB-AF40WK-G:Colour: 0.01 lux (F2.0 AGC ON) 0 lux with IR on
Day/Night	IPC2122LB-AF28WK-G/IPC2122LB-AF40WK-G:IR-cut filter with auto switch (ICR)
Shutter	IPC2122LB-AF28WK-G/IPC2122LB-AF40WK-G:Auto/Manual, 1 ~ 1/100000s
Adjustment Angle	IPC2122LB-AF28WK-G/IPC2122LB-AF40WK-G:Pan: 0° ~ 360°, Tilt: 0° ~ 90°, Rotate: 0° ~ 360°
S/N	IPC2122LB-AF28WK-G/IPC2122LB-AF40WK-G:>52dB
WDR	IPC2122LB-AF28WK-G/IPC2122LB-AF40WK-G:DWDR
Lens	Description
Focal Length	IPC2122LB-AF28WK-G:2.8 mm IPC2122LB-AF40WK-G:4.0 mm
Iris Type	IPC2122LB-AF28WK-G/IPC2122LB-AF40WK-G:Fixed
Iris	IPC2122LB-AF28WK-G/IPC2122LB-AF40WK-G:F2.0
Field of View (H)	IPC2122LB-AF28WK-G:101.1° IPC2122LB-AF40WK-G:83.7°
Field of View (V)	IPC2122LB-AF28WK-G:55.0° IPC2122LB-AF40WK-G:44.6°
Field of View (D)	IPC2122LB-AF28WK-G:111.0° IPC2122LB-AF40WK-G:89.1°
DORI	Description
DORI Distance(Lens)	IPC2122LB-AF28WK-G:2.8mm IPC2122LB-AF40WK-G:4.0mm
DORI Distance(Detect)	IPC2122LB-AF28WK-G:45.0m(147.6ft) IPC2122LB-AF40WK-G:64.3m(211.0ft)
DORI Distance(Observe)	IPC2122LB-AF28WK-G:18.0m(59.1ft) IPC2122LB-AF40WK-G:25.7m(84.3ft)
DORI Distance(Recognize)	IPC2122LB-AF28WK-G:9.0m(29.5ft) IPC2122LB-AF40WK-G:12.9m(42.3ft)
DORI Distance(Identify)	IPC2122LB-AF28WK-G:4.5m(14.8ft) IPC2122LB-AF40WK-G:6.4m(21.0ft)
Illuminator	Description

Supplemental Light	IPC2122LB-AF28WK-G/IPC2122LB-AF40WK-G:IR
Illumination Distance(IR)	IPC2122LB-AF28WK-G/IPC2122LB-AF40WK-G:30 m (98.4 ft)
Wavelength	IPC2122LB-AF28WK-G/IPC2122LB-AF40WK-G:850 nm
IR On/Off Control	IPC2122LB-AF28WK-G/IPC2122LB-AF40WK-G:Auto/Manual
Video	Description
Video Compression	IPC2122LB-AF28WK-G/IPC2122LB-AF40WK-G:Ultra 265; H.265; H.264; MJPEG
H.264 Code Profile	IPC2122LB-AF28WK-G/IPC2122LB-AF40WK-G:Baseline profile, Main profile, High profile
Frame Rate	IPC2122LB-AF28WK-G/IPC2122LB-AF40WK-G:Main Stream: 1080P (1920*1080), Max 30fps; 720P (1280*720), Max 30fps Sub Stream: 640*360,Max 30fps; 2CIF(704*288), Max 30fps; CIF(352*288), Max 30fps;
Video Bit Rate	IPC2122LB-AF28WK-G/IPC2122LB-AF40WK-G:128 Kbps ~ 6144 Kbps
U-code	IPC2122LB-AF28WK-G/IPC2122LB-AF40WK-G:Support
OSD	IPC2122LB-AF28WK-G/IPC2122LB-AF40WK-G:Up to 4 OSDs
Privacy Mask	IPC2122LB-AF28WK-G/IPC2122LB-AF40WK-G:Support (Only NVR)
ROI	IPC2122LB-AF28WK-G/IPC2122LB-AF40WK-G:Up to 8 areas
Video Stream	IPC2122LB-AF28WK-G/IPC2122LB-AF40WK-G:Dual Streams
Image	Description
White Balance	IPC2122LB-AF28WK-G/IPC2122LB-AF40WK-G:Auto; Outdoor; Fine Tune; Sodium Lamp; Locked; Auto2
Digital Noise Reduction	IPC2122LB-AF28WK-G/IPC2122LB-AF40WK-G:2D/3D DNR
Smart IR	IPC2122LB-AF28WK-G/IPC2122LB-AF40WK-G:Support
Flip	IPC2122LB-AF28WK-G/IPC2122LB-AF40WK-G:Normal; Flip Vertical; Flip Horizontal; 180°
Dewarping	IPC2122LB-AF28WK-G/IPC2122LB-AF40WK-G:N/A
HLC	IPC2122LB-AF28WK-G/IPC2122LB-AF40WK-G:Support
BLC	IPC2122LB-AF28WK-G/IPC2122LB-AF40WK-G:Support
Defog	IPC2122LB-AF28WK-G/IPC2122LB-AF40WK-G:Digital Defog
Events	Description
Basic Detection	IPC2122LB-AF28WK-G/IPC2122LB-AF40WK-G:Human Body Detection; Motion Detection; Tampering Alarm; Audio Detection
General Function	IPC2122LB-AF28WK-G/IPC2122LB-AF40WK-G:Watermark; IP Address Filtering; Access Policy; ARP Protection; RTSP Authentication; User Authentication; HTTP Authentication
Audio	Description

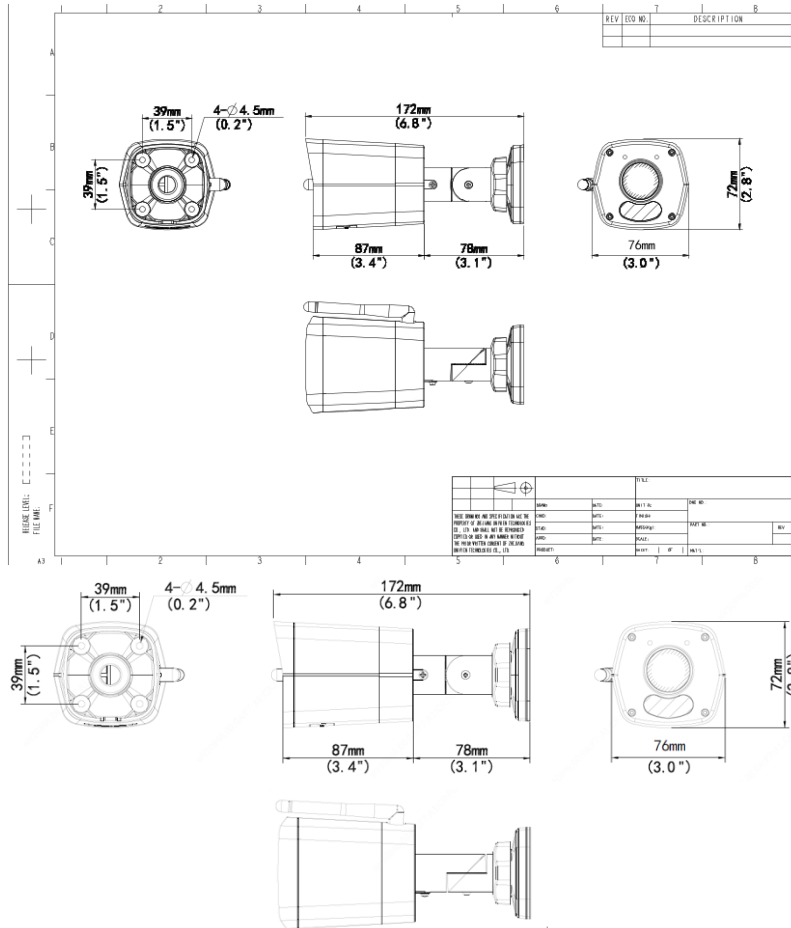
Audio Compression	IPC2122LB-AF28WK-G/IPC2122LB-AF40WK-G:G.711U; G.711A
Audio Bitrate	IPC2122LB-AF28WK-G/IPC2122LB-AF40WK-G:64 Kbps
Two-way Audio	IPC2122LB-AF28WK-G/IPC2122LB-AF40WK-G:N/A
Suppression	IPC2122LB-AF28WK-G/IPC2122LB-AF40WK-G:Support
Sampling Rate	IPC2122LB-AF28WK-G/IPC2122LB-AF40WK-G:8KHZ
Storage	Description
Edge Storage	IPC2122LB-AF28WK-G/IPC2122LB-AF40WK-G:Micro SD, up to 512 GB
Network Storage	IPC2122LB-AF28WK-G/IPC2122LB-AF40WK-G:ANR; NAS (NFS)
Network	Description
Protocols	IPC2122LB-AF28WK-G/IPC2122LB-AF40WK-G:IPv4; TCP; UDP; DHCP; RTSP; DNS; DDNS; NTP; HTTP
Compatible Integration	IPC2122LB-AF28WK-G/IPC2122LB-AF40WK-G:ONVIF (Profile S, Profile G, Profile T); API; SDK
User/Host	IPC2122LB-AF28WK-G/IPC2122LB-AF40WK-G:Up to 32 users, 2 user levels: administrator and common user
Client	IPC2122LB-AF28WK-G/IPC2122LB-AF40WK-G:UNV-Link; UNV-Link Pro; EZStation
Web Browser	IPC2122LB-AF28WK-G/IPC2122LB-AF40WK-G:Plug-in required live view: IE 10 and above, Chrome 45 and above, Firefox 52 and above, Edge 79 and above
Wi-Fi	Description
Wireless Standards	IPC2122LB-AF28WK-G/IPC2122LB-AF40WK-G:IEEE802.11b/g/n
Frequency Range	IPC2122LB-AF28WK-G/IPC2122LB-AF40WK-G:2.4 GHz ~ 2.4835 GHz
Channel Bandwidth	IPC2122LB-AF28WK-G/IPC2122LB-AF40WK-G:20 MHz Support
Modulation Mode	IPC2122LB-AF28WK-G/IPC2122LB-AF40WK-G:802.11b: CCK, QPSK, BPSK 802.11g/n: OFDM/HT
Wi-Fi Security	IPC2122LB-AF28WK-G/IPC2122LB-AF40WK-G:64/128-bit WEP, WPA-PSK/WPA2-PSK
Transmit Power	IPC2122LB-AF28WK-G/IPC2122LB-AF40WK-G:802.11b: $17 \pm 1.5\text{dBm}$ @11Mbps 802.11g: $14 \pm 1.5\text{dBm}$ @ 54Mbps 802.11n: $12.5 \pm 1.5\text{dBm}$ @150Mbps
Receive Sensitivity	IPC2122LB-AF28WK-G/IPC2122LB-AF40WK-G:802.11b: -90dBm @11Mbps (Typical) 802.11g: -75dBm @54Mbps (Typical) 802.11n: -74dBm @150Mbps (Typical)
Transmission Rate	IPC2122LB-AF28WK-G/IPC2122LB-AF40WK-G:802.11b: 11Mbps 802.11g: 54Mbps 802.11n: up to 150Mbps

Interface	Description
Audio I/O	IPC2122LB-AF28WK-G/IPC2122LB-AF40WK-G:N/A
Alarm I/O	IPC2122LB-AF28WK-G/IPC2122LB-AF40WK-G:N/A
Serial Port	IPC2122LB-AF28WK-G/IPC2122LB-AF40WK-G:N/A
Built-in Mic	IPC2122LB-AF28WK-G/IPC2122LB-AF40WK-G:Support
Built-in Speaker	IPC2122LB-AF28WK-G/IPC2122LB-AF40WK-G:N/A
WIFI	IPC2122LB-AF28WK-G/IPC2122LB-AF40WK-G:Support
Network	IPC2122LB-AF28WK-G/IPC2122LB-AF40WK-G:1 x RJ45 10M/100M Base-TX Ethernet
Video Output	IPC2122LB-AF28WK-G/IPC2122LB-AF40WK-G:N/A
Certification	Description
EMC	IPC2122LB-AF28WK-G/IPC2122LB-AF40WK-G:CE-EMC (EN 55032, EN 61000-3-3, EN IEC 61000-3-2, EN 55035) FCC (FCC 47 CFR part15 B)
RF	IPC2122LB-AF28WK-G/IPC2122LB-AF40WK-G:FCC ID (FCC CFR 47 part15 C)CE RED (EN 301 489-1, EN 301 489-17, EN 300 328, EN 62311)
Safety	IPC2122LB-AF28WK-G/IPC2122LB-AF40WK-G:CE LVD (EN 62368-1) CB (IEC 62368-1) UL/CUL (UL 62368-1, CAN/CSA C22.2 No. 62368-1)
Environment	IPC2122LB-AF28WK-G/IPC2122LB-AF40WK-G:CE-RoHS (2011/65/EU;(EU)2015/863); WEEE (2012/19/EU);
Protection	IPC2122LB-AF28WK-G/IPC2122LB-AF40WK-G:IP67 (IEC 60529)
General	Description
Power	IPC2122LB-AF28WK-G/IPC2122LB-AF40WK-G:DC 12V ± 25% Power consumption: Max 4.0W
Power Interface	IPC2122LB-AF28WK-G/IPC2122LB-AF40WK-G:Ø 5.5mm coaxial power plug
Dimensions	IPC2122LB-AF28WK-G/IPC2122LB-AF40WK-G:172 × 76 × 72 mm (6.8" × 3" × 2.8")
Weight	IPC2122LB-AF28WK-G/IPC2122LB-AF40WK-G:0.25 kg (0.55 lb)
Material	IPC2122LB-AF28WK-G/IPC2122LB-AF40WK-G:Metal + Plastic
Working Environment	IPC2122LB-AF28WK-G/IPC2122LB-AF40WK-G:-30 °C ~ 60 °C (-22 °F ~ 140 °F), Humidity: ≤95% RH (non-condensing)
Storage Environment	IPC2122LB-AF28WK-G/IPC2122LB-AF40WK-G:-30 °C ~ 60 °C (-22 °F ~ 140 °F), Humidity: ≤95% RH (non-condensing)
Surge Protection	IPC2122LB-AF28WK-G/IPC2122LB-AF40WK-G:4KV
Reset Button	IPC2122LB-AF28WK-G/IPC2122LB-AF40WK-G:Support

Web Client Language

IPC2122LB-AF28WK-G/IPC2122LB-AF40WK-G:4 Languages
English, Russian, Spanish, Vietnamese

Dimensions



Accessories

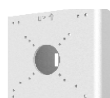
TR-JB05-A-IN

Small Bullet Junction Box(Support wiring from behind,Square)



TR-UP06-C-IN

Pole Mounting Bracket for Bullet Junction Box Only



TR-UP06-B-IN

Bullet Pole Mounting Bracket



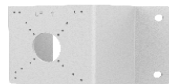
TR-A01-IN

NPT 3/4" Waterproof Cable Gland



TR-UC08-C

Bullet&Dome Corner Mounting Bracket



Zhejiang Uniview Technologies Co., Ltd.

No. 369, Xietong Road, Xixing Sub-district, Binjiang District, Hangzhou City, 310051, Zhejiang Province, China (Zhejiang) Pilot Free Trade Zone, China

Email: overseasbusiness@uniview.com; globalsupport@uniview.com

<http://www.uniview.com>

©2023-2024 Zhejiang Uniview Technologies Co., Ltd. All rights reserved.

*Product specifications and availability are subject to change without notice.

*Despite our best efforts, technical or typographical errors may exist in this document. Uniview cannot be held responsible for any such errors and reserves the right to change the contents of this document without prior notice.